

TUTTLE ROYALE

BEING A REPLAT OF SHOPPES AT VILLAGE ROYALE AS RECORDED IN PLAT BOOK 124, PAGES 68 THROUGH 71, PUBLIC RECORDS OF PALM BEACH COUNTY, FLORIDA AND BEING A REPLAT OF A PORTION OF THE PLAT OF PALM BEACH FARMS PLAT NO.3 AS RECORDED IN PLAT BOOK 2, PAGES 45 THROUGH 54, PUBLIC RECORDS OF PALM BEACH COUNTY, FLORIDA AND LYING IN A PORTION OF SECTION 36, TOWNSHIP 43 SOUTH, RANGE 41 EAST, AND SECTION 1, TOWNSHIP 44 SOUTH, RANGE 41 EAST, THE VILLAGE OF ROYAL PALM BEACH, PALM BEACH COUNTY, FLORIDA

DECEMBER 2021
SHEET 12 OF 13

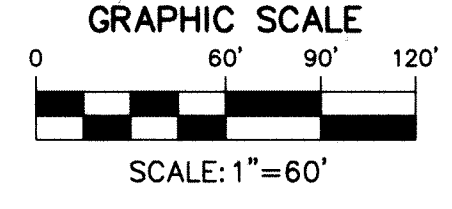
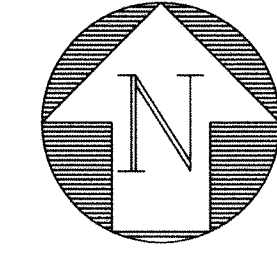
STATE OF FLORIDA
COUNTY OF PALM BEACH

THIS PLAT WAS FILED FOR
RECORD AT _____

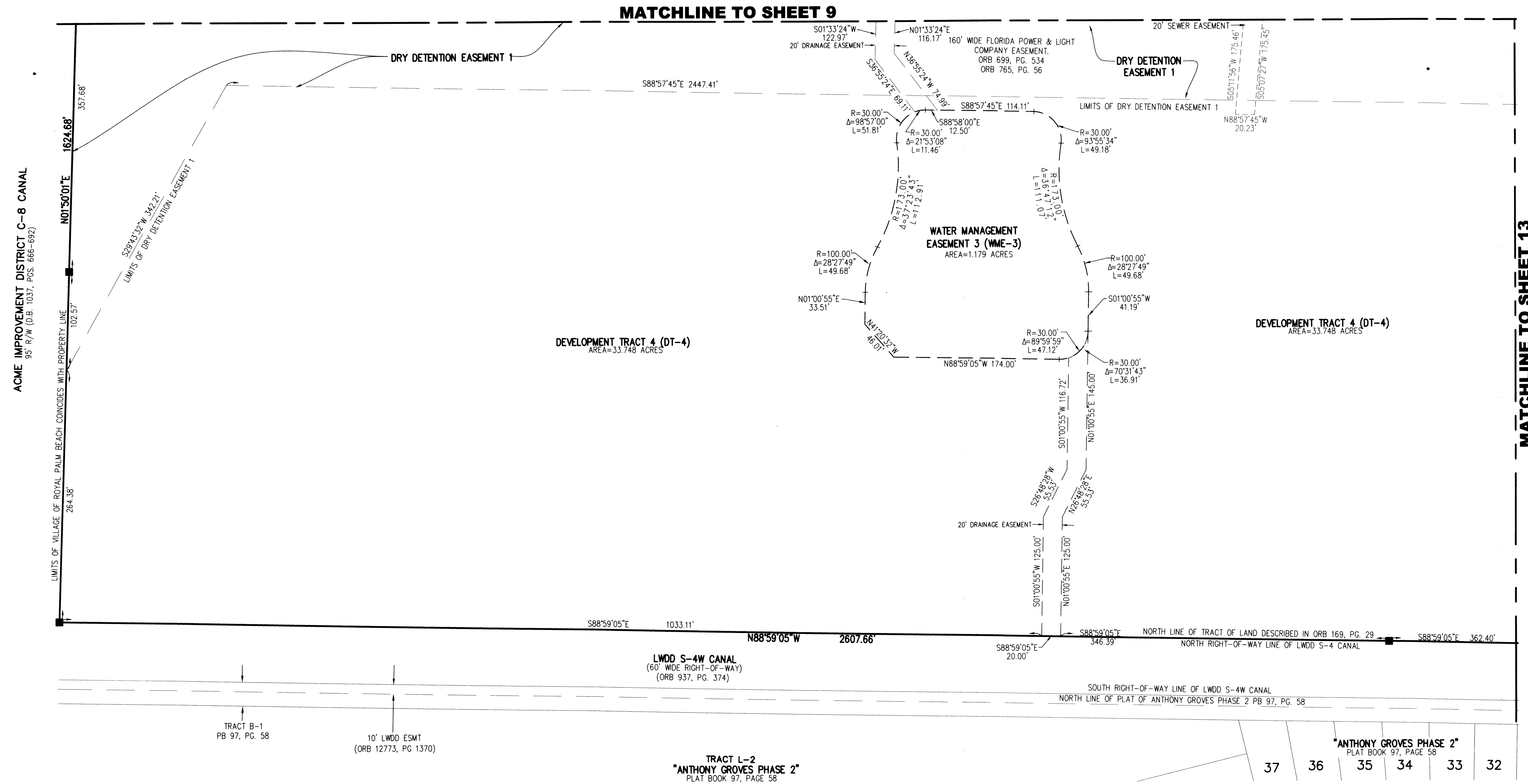
THIS _____ DAY OF _____
AND DULY RECORDED
IN PLAT BOOK NO. _____
ON PAGE(S) _____

JOSEPH ABRUZZO,
CLERK AND CIRCUIT COURT &
COMPTROLLER

BY: _____
DEPUTY CLERK



112



LEGEND

- ⊙ CENTERLINE
- LWDD LAKE WORTH DRAINAGE DISTRICT
- ORB OFFICIAL RECORD BOOK
- SFWM SOUTH FLORIDA WATER MANAGEMENT DISTRICT
- P.B. PLAT BOOK
- PG.(S) PAGE(S)
- R/W RIGHT-OF-WAY
- SET 4" X 4" CONCRETE MONUMENT WITH ALUMINUM DISK STAMPED P.R.M. LB#6603
- FOUND PERMANENT REFERENCE MONUMENT AS NOTED
- SET MAG NAIL AND DISK PCP LB#6603
- R RADIUS
- L ARC LENGTH
- Δ DELTA ANGLE
- D.B. DEED BOOK
- LB LICENSED BUSINESS
- PRM PERMANENT REFERENCE MONUMENT
- PCP PERMANENT CONTROL POINT
- ESMT EASEMENT
- V.O.W. VILLAGE OF WELLINGTON
- PRT PRIVATE RECREATION TRACT



1280 N. CONGRESS AVENUE, SUITE 101,
WEST PALM BEACH, FLORIDA 33409
PH (561)655-1151 • FAX (561)832-9390
WWW.ENGENUITYGROUP.COM

TUTTLE ROYALE

DATE	2/2/2022
SCALE	1"=60'
CAD FILE	13037.96 MASTER PLAT
\$D&K PROJECT	13037.04 SR 80 RPB ADD.
DRAWN	STAFF
CHECKED	STAFF

S H E E T	12/13

V:\Land Projects 82\13037.04 SR 80 Royal Palm Beach Addition\dwg\13037.96 Master Plat Jun 2022 updated.dwg #3.dwg 2/15/2022 11:17:19 AM EST